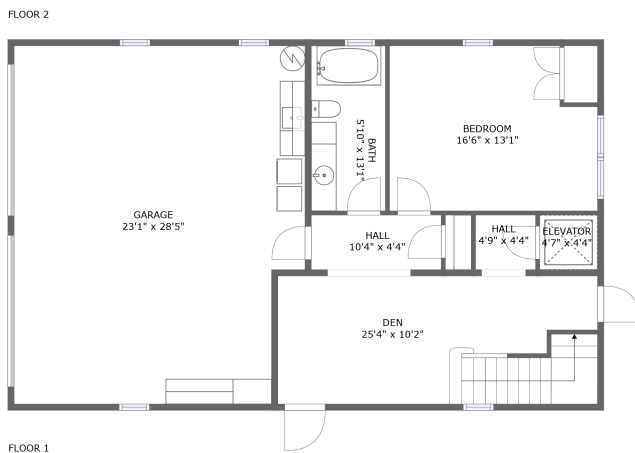
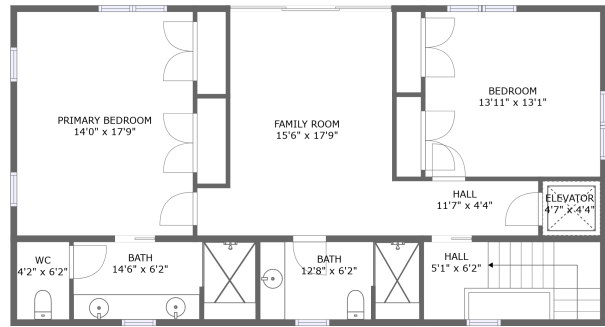
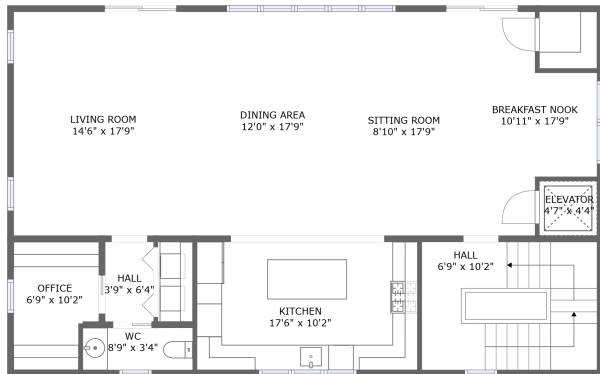



Home report


5525 Highway A1a, Melbourne Beach, Brevard County, Florida,
United States, 32951



Property summary


 **1** Garages

 **3** Bedrooms

 **3** Bathrooms

 **1** Half baths

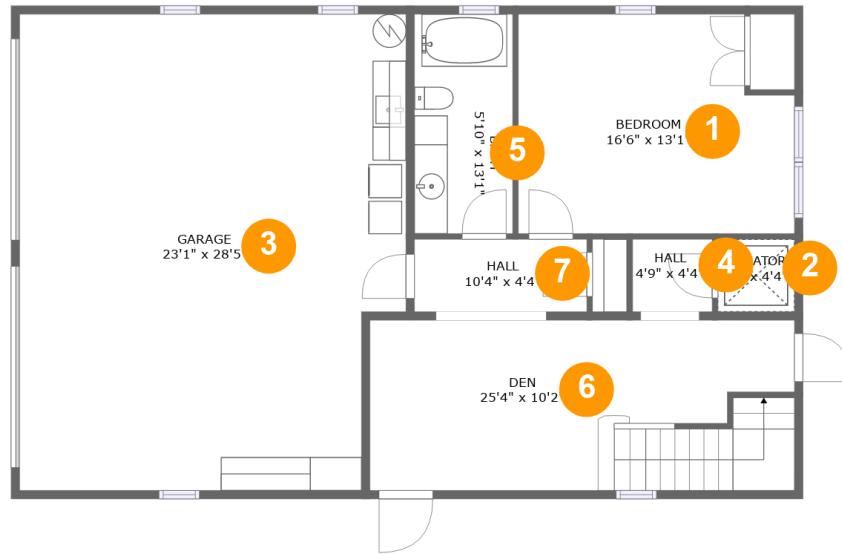
 **3** Floors

 **3,254** Gross living area sqft

 **3,984** Total sqft

Home report

5525 Highway A1a, Melbourne Beach, Brevard County, Florida,
United States, 32951



Room dimensions

Floor 1

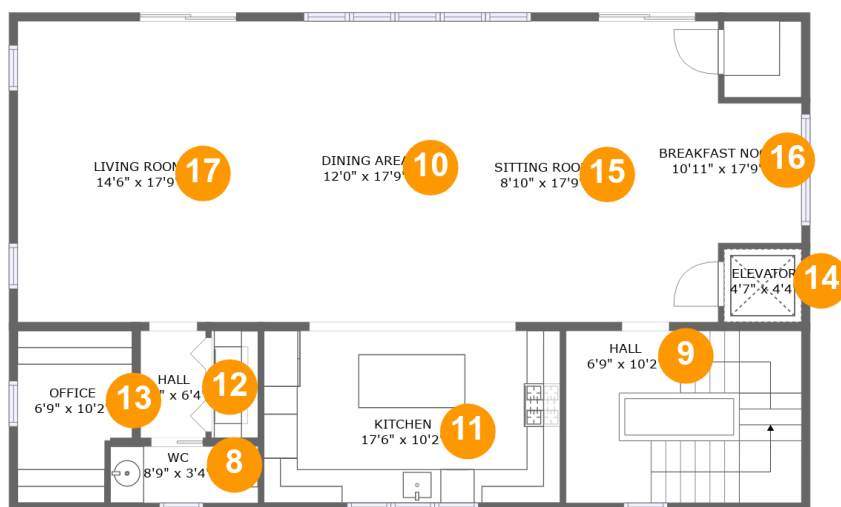
Total sqft: 1391

Living area: 705

| # | | Dimensions | sqft | Counted as living area |
|---|----------|---------------|------------|------------------------|
| 1 | Bedroom | 16'6" x 13'1" | 202 sq. ft | Yes |
| 2 | Elevator | 4'7" x 4'4" | 20 sq. ft | No |
| 3 | Garage | 23'1" x 28'5" | 628 sq. ft | No |
| 4 | Hall | 4'9" x 4'4" | 21 sq. ft | Yes |
| 5 | Bath | 5'10" x 13'1" | 77 sq. ft | Yes |
| 6 | Den | 25'4" x 10'2" | 255 sq. ft | Yes |
| 7 | Hall | 10'4" x 4'4" | 45 sq. ft | Yes |

Home report

5525 Highway A1a, Melbourne Beach, Brevard County, Florida, United States, 32951



Room dimensions

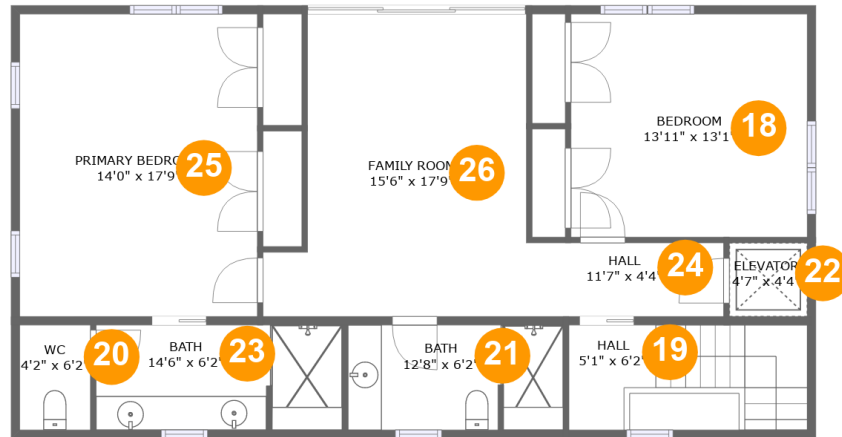
Floor 2

Total sqft: 1391 Living area: 1369

| # | | Dimensions | sqft | Counted as living area |
|----|----------------|----------------|------------|------------------------|
| 8 | WC | 8'9" x 3'4" | 29 sq. ft | Yes |
| 9 | Hall | 6'9" x 10'2" | 141 sq. ft | Yes |
| 10 | Dining Area | 12'0" x 17'9" | 213 sq. ft | Yes |
| 11 | Kitchen | 17'6" x 10'2" | 178 sq. ft | Yes |
| 12 | Hall | 3'9" x 6'4" | 24 sq. ft | Yes |
| 13 | Office | 6'9" x 10'2" | 63 sq. ft | Yes |
| 14 | Elevator | 4'7" x 4'4" | 20 sq. ft | No |
| 15 | Sitting Room | 8'10" x 17'9" | 157 sq. ft | Yes |
| 16 | Breakfast Nook | 10'11" x 17'9" | 147 sq. ft | Yes |
| 17 | Living Room | 14'6" x 17'9" | 261 sq. ft | Yes |

Home report

5525 Highway A1a, Melbourne Beach, Brevard County, Florida,
United States, 32951



Room dimensions

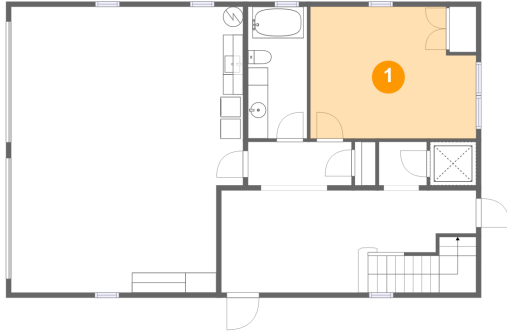
Floor 3

Total sqft: 1202 Living area: 1180

| # | | Dimensions | sqft | Counted as living area |
|----|-----------------|----------------|------------|------------------------|
| 18 | Bedroom | 13'11" x 13'1" | 182 sq. ft | Yes |
| 19 | Hall | 5'1" x 6'2" | 86 sq. ft | Yes |
| 20 | WC | 4'2" x 6'2" | 26 sq. ft | Yes |
| 21 | Bath | 12'8" x 6'2" | 77 sq. ft | Yes |
| 22 | Elevator | 4'7" x 4'4" | 20 sq. ft | No |
| 23 | Bath | 14'6" x 6'2" | 88 sq. ft | Yes |
| 24 | Hall | 11'7" x 4'4" | 50 sq. ft | Yes |
| 25 | Primary Bedroom | 14'0" x 17'9" | 248 sq. ft | Yes |
| 26 | Family Room | 15'6" x 17'9" | 238 sq. ft | Yes |

5525 Highway A1a, Melbourne Beach, Brevard County, Florida,
United States, 32951

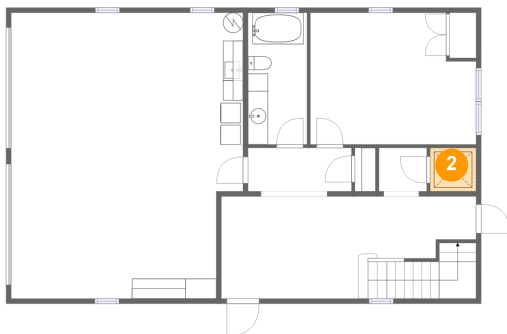
1 Floor 1 - Bedroom



Dimensions: 16'6" x 13'1"
Area: 202 sq. ft
Counted as living area: Yes

Heated: Yes
Finished: Yes
Enclosed: Yes
Contiguous: Yes
Permitted: Yes
Wet space: No
Addition: No
Conversion: No

2 Floor 1 - Elevator

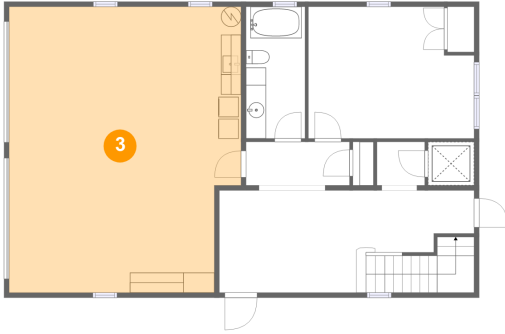


Dimensions: 4'7" x 4'4"
Area: 20 sq. ft
Counted as living area: No

Heated: No
Finished: No
Enclosed: Yes
Contiguous: Yes
Permitted: Yes
Wet space: No
Addition: No
Conversion: No

5525 Highway A1a, Melbourne Beach, Brevard County, Florida,
United States, 32951

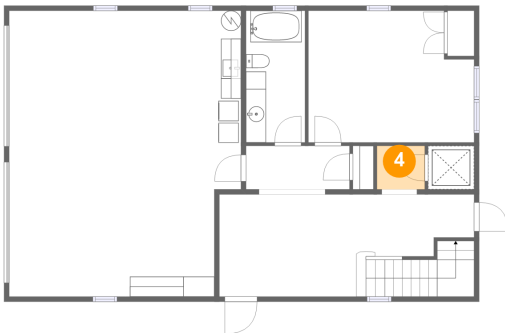
3 Floor 1 - Garage



Dimensions: 23'1" x 28'5"
Area: 628 sq. ft
Counted as living area: No

Heated: No
Finished: No
Enclosed: Yes
Contiguous: Yes
Permitted: Yes
Wet space: No
Addition: No
Conversion: No

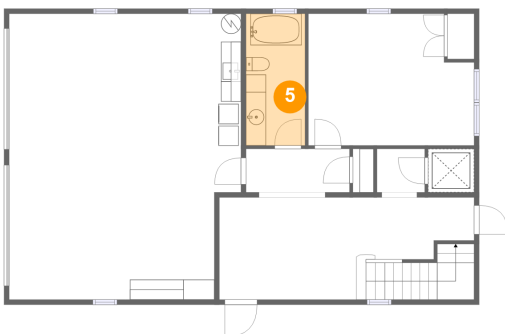
4 Floor 1 - Hall



Dimensions: 4'9" x 4'4"
Area: 21 sq. ft
Counted as living area: Yes

Heated: Yes
Finished: Yes
Enclosed: Yes
Contiguous: Yes
Permitted: Yes
Wet space: No
Addition: No
Conversion: No

5 Floor 1 - Bath

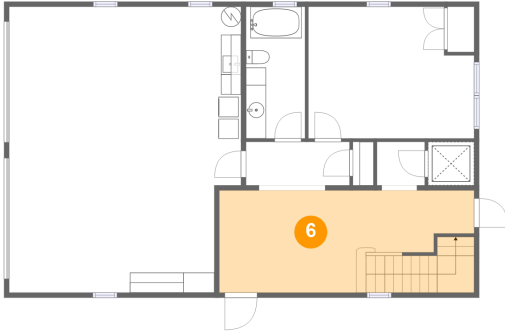


Dimensions: 5'10" x 13'1"
Area: 77 sq. ft
Counted as living area: Yes

Heated: Yes
Finished: Yes
Enclosed: Yes
Contiguous: Yes
Permitted: Yes
Wet space: Yes
Addition: No
Conversion: No

5525 Highway A1a, Melbourne Beach, Brevard County, Florida,
United States, 32951

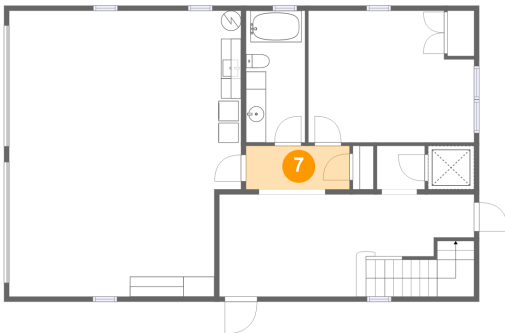
6 Floor 1 - Den



Dimensions: 25'4" x 10'2"
Area: 255 sq. ft
Counted as living area: Yes

Heated: Yes
Finished: Yes
Enclosed: Yes
Contiguous: Yes
Permitted: Yes
Wet space: No
Addition: No
Conversion: No

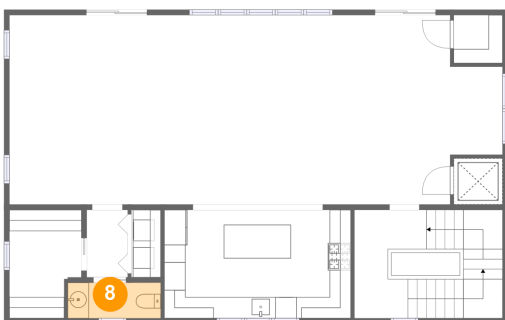
7 Floor 1 - Hall



Dimensions: 10'4" x 4'4"
Area: 45 sq. ft
Counted as living area: Yes

Heated: Yes
Finished: Yes
Enclosed: Yes
Contiguous: Yes
Permitted: Yes
Wet space: No
Addition: No
Conversion: No

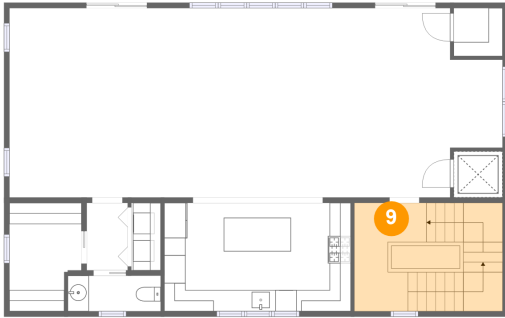
8 Floor 2 - WC



Dimensions: 8'9" x 3'4"
Area: 29 sq. ft
Counted as living area: Yes

Heated: Yes
Finished: Yes
Enclosed: Yes
Contiguous: Yes
Permitted: Yes
Wet space: Yes
Addition: No
Conversion: No

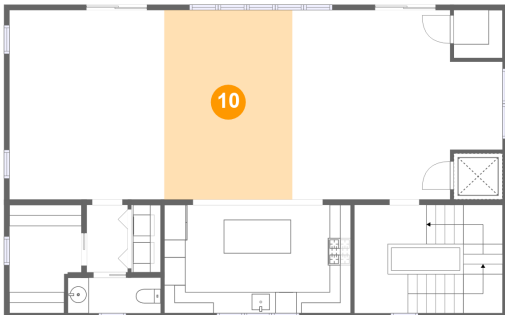
9 Floor 2 - Hall



Dimensions: 6'9" x 10'2"
Area: 141 sq. ft
Counted as living area: Yes

Heated: Yes
Finished: Yes
Enclosed: Yes
Contiguous: Yes
Permitted: Yes
Wet space: No
Addition: No
Conversion: No

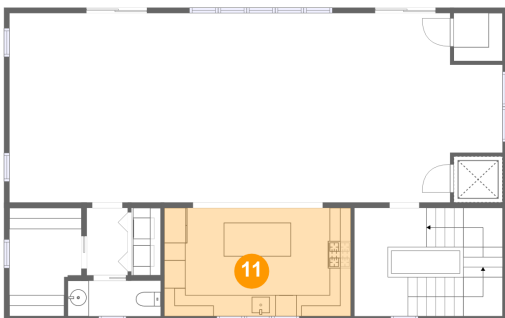
10 Floor 2 - Dining Area



Dimensions: 12'0" x 17'9"
Area: 213 sq. ft
Counted as living area: Yes

Heated: Yes
Finished: Yes
Enclosed: Yes
Contiguous: Yes
Permitted: Yes
Wet space: No
Addition: No
Conversion: No

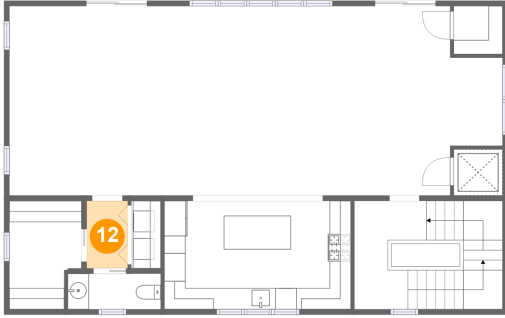
11 Floor 2 - Kitchen



Dimensions: 17'6" x 10'2"
Area: 178 sq. ft
Counted as living area: Yes

Heated: Yes
Finished: Yes
Enclosed: Yes
Contiguous: Yes
Permitted: Yes
Wet space: No
Addition: No
Conversion: No

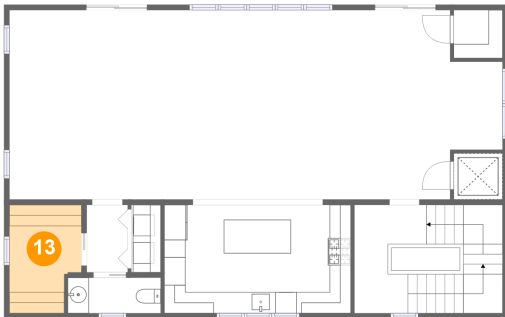
12 Floor 2 - Hall



Dimensions: 3'9" x 6'4"
Area: 24 sq. ft
Counted as living area: Yes

Heated: Yes
Finished: Yes
Enclosed: Yes
Contiguous: Yes
Permitted: Yes
Wet space: No
Addition: No
Conversion: No

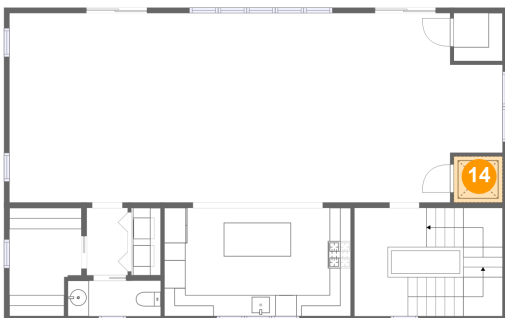
13 Floor 2 - Office



Dimensions: 6'9" x 10'2"
Area: 63 sq. ft
Counted as living area: Yes

Heated: Yes
Finished: Yes
Enclosed: Yes
Contiguous: Yes
Permitted: Yes
Wet space: No
Addition: No
Conversion: No

14 Floor 2 - Elevator

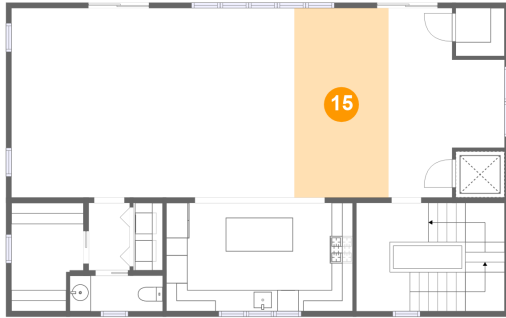


Dimensions: 4'7" x 4'4"
Area: 20 sq. ft
Counted as living area: No

Heated: No
Finished: No
Enclosed: Yes
Contiguous: Yes
Permitted: Yes
Wet space: No
Addition: No
Conversion: No

5525 Highway A1a, Melbourne Beach, Brevard County, Florida,
United States, 32951

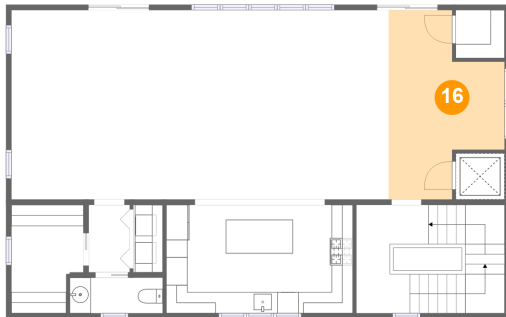
15 Floor 2 - Sitting Room



Dimensions: 8'10" x 17'9"
Area: 157 sq. ft
Counted as living area: Yes

Heated: Yes
Finished: Yes
Enclosed: Yes
Contiguous: Yes
Permitted: Yes
Wet space: No
Addition: No
Conversion: No

16 Floor 2 - Breakfast Nook



Dimensions: 10'11" x 17'9"
Area: 147 sq. ft
Counted as living area: Yes

Heated: Yes
Finished: Yes
Enclosed: Yes
Contiguous: Yes
Permitted: Yes
Wet space: No
Addition: No
Conversion: No

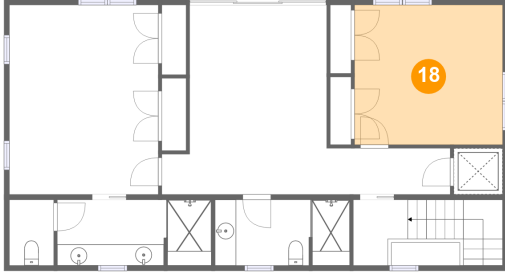
17 Floor 2 - Living Room



Dimensions: 14'6" x 17'9"
Area: 261 sq. ft
Counted as living area: Yes

Heated: Yes
Finished: Yes
Enclosed: Yes
Contiguous: Yes
Permitted: Yes
Wet space: No
Addition: No
Conversion: No

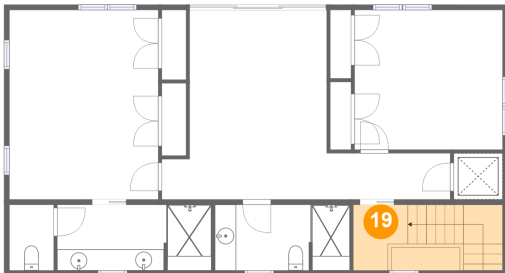
18 Floor 3 - Bedroom



Dimensions: 13'11" x 13'1"
Area: 182 sq. ft
Counted as living area: Yes

Heated: Yes
Finished: Yes
Enclosed: Yes
Contiguous: Yes
Permitted: Yes
Wet space: No
Addition: No
Conversion: No

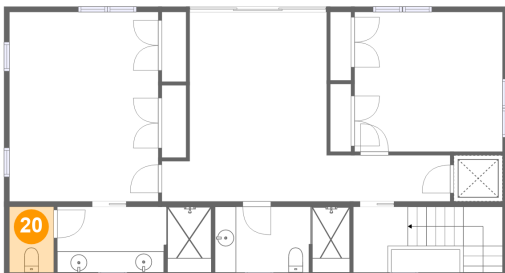
19 Floor 3 - Hall



Dimensions: 5'1" x 6'2"
Area: 86 sq. ft
Counted as living area: Yes

Heated: Yes
Finished: Yes
Enclosed: Yes
Contiguous: Yes
Permitted: Yes
Wet space: No
Addition: No
Conversion: No

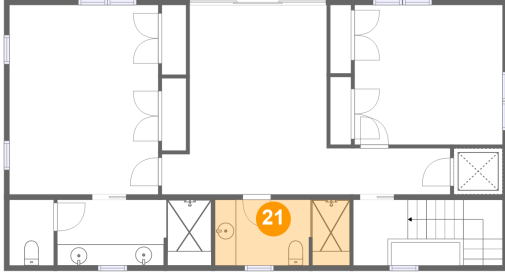
20 Floor 3 - WC



Dimensions: 4'2" x 6'2"
Area: 26 sq. ft
Counted as living area: Yes

Heated: Yes
Finished: Yes
Enclosed: Yes
Contiguous: Yes
Permitted: Yes
Wet space: Yes
Addition: No
Conversion: No

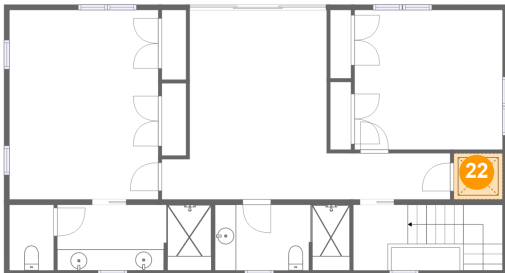
21 Floor 3 - Bath



Dimensions: 12'8" x 6'2"
Area: 77 sq. ft
Counted as living area: Yes

Heated: Yes
Finished: Yes
Enclosed: Yes
Contiguous: Yes
Permitted: Yes
Wet space: Yes
Addition: No
Conversion: No

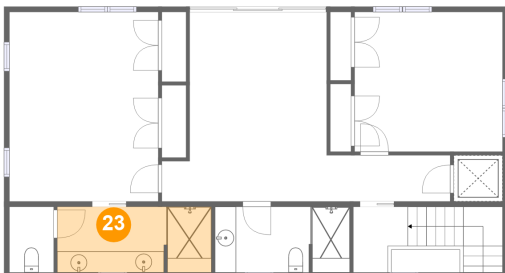
22 Floor 3 - Elevator



Dimensions: 4'7" x 4'4"
Area: 20 sq. ft
Counted as living area: No

Heated: No
Finished: No
Enclosed: Yes
Contiguous: Yes
Permitted: Yes
Wet space: No
Addition: No
Conversion: No

23 Floor 3 - Bath

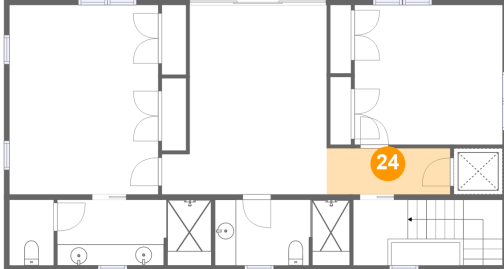


Dimensions: 14'6" x 6'2"
Area: 88 sq. ft
Counted as living area: Yes

Heated: Yes
Finished: Yes
Enclosed: Yes
Contiguous: Yes
Permitted: Yes
Wet space: Yes
Addition: No
Conversion: No

5525 Highway A1a, Melbourne Beach, Brevard County, Florida,
United States, 32951

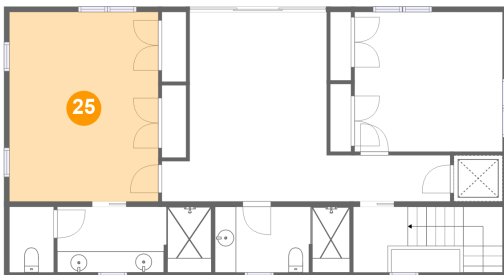
24 Floor 3 - Hall



Dimensions: 11'7" x 4'4"
Area: 50 sq. ft
Counted as living area: Yes

Heated: Yes
Finished: Yes
Enclosed: Yes
Contiguous: Yes
Permitted: Yes
Wet space: No
Addition: No
Conversion: No

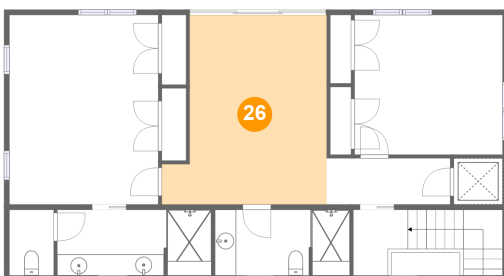
25 Floor 3 - Primary Bedroom



Dimensions: 14'0" x 17'9"
Area: 248 sq. ft
Counted as living area: Yes

Heated: Yes
Finished: Yes
Enclosed: Yes
Contiguous: Yes
Permitted: Yes
Wet space: No
Addition: No
Conversion: No

26 Floor 3 - Family Room



Dimensions: 15'6" x 17'9"
Area: 238 sq. ft
Counted as living area: Yes

Heated: Yes
Finished: Yes
Enclosed: Yes
Contiguous: Yes
Permitted: Yes
Wet space: No
Addition: No
Conversion: No